

# Gamogenetic cycle, condition index and meat yield of the Noah's Ark shell (*Arca noae* Linnaeus, 1758) from Gerence Bay, Aegean Sea Turkey

## Gerence Körfezi'ndeki Nuhun gemisi türünün (*Arca noae* Linnaeus, 1758) gametogenik döngüsü, kondisyon indeksi ve et veriminin belirlenmesi

Sefa Acarlı<sup>1\*</sup>  • Aynur Lök<sup>2</sup>  • Deniz Acarlı<sup>3</sup>  • Aysun Küçükdermenci<sup>2</sup> 

<sup>1</sup> Çanakkale Onsekiz Mart University, Faculty of Marine Sciences and Technology, Terzioğlu Campus 17100 Çanakkale, Turkey

<sup>2</sup> Ege University, Fisheries Faculty, Department of Aquaculture, Bornova, 35100, Izmir, Turkey

<sup>3</sup> Çanakkale Onsekiz Mart University, Gökçeada School of Applied Sciences, Gökçeada, Çanakkale, Turkey

\* Corresponding author: [sefaacarli@comu.edu.tr](mailto:sefaacarli@comu.edu.tr)

Received date: 04.01.2018

Accepted date: 09.03.2018

### How to cite this paper:

Acarlı, S., Lök, A., Acarlı, D. & Küçükdermenci, A. (2018). Gamogenetic cycle, condition index and meat yield of the Noah's Ark shell (*Arca noae* Linnaeus, 1758) from Gerence Bay, Aegean Sea Turkey. *Ege Journal of Fisheries and Aquatic Sciences*, 35(2), 141-149. DOI:10.12714/egejfas.2018.35.2.06

**Abstract:** Gamogenetic cycle, the condition index and meat yield of the *Arca noae* Linnaeus, 1758 (Noah's ark shell) were followed in Gerence Bay (Aegean Sea, Turkey), between August 2009 and July 2010. Temperature, salinity, chlorophyll-a, particulate organic and inorganic matter were monitored during the sampling period. According to histological observation, inactive stage was determined as 100% in September. The spawning period was observed through the year except September, with a peak from April to June. Sex ratios were not equal and females were dominant during the study period (2:1). Meat yield, condition index and gonad index reveal a positive relationship between each other ( $P \leq 0.05$ ). Among environmental parameters, inverse relationship was only found between particulate inorganic matter and reproduction ( $P \leq 0.05$ ).

**Keywords:** *Arca noae*, histology, reproduction, condition index, meat yield

**Öz:** Bu çalışmada Gerence Körfezi'nde (Ege Denizi, Türkiye) *Arca noae* Linnaeus, 1758 türünün (Nuhun gemisi) gametogenik döngüsü, kondisyon indeksi ve et verimi Ağustos 2009 ve Temmuz 2010 tarihleri arasında takip edilmiştir. Her örnekleme döneminde sıcaklık, tuzluluk, klorofil-a, partikül organik ve partikül inorganik madde içeriği belirlenmiştir. Yapılan histolojik çalışmalara göre dinlenme safhası Eylül ayında %100 olarak tespit edilmiştir. Eylül ayının dışında, döl atımı tüm yıl boyunca gözlenmiş ve Nisan ile Haziran ayları arasında yüksek değerlerde olduğu belirlenmiştir. Cinsiyet oranı eşit olarak tespit edilmemiştir ve dişiler popülasyonda baskındır (2:1). Et verimi, kondisyon indeksi ve gonadindeksi arasında pozitif ilişki tespit edilmiştir ( $P \leq 0.05$ ). Çevresel parametreler içerisinde sadece partikül inorganik madde ile üreme arasında ters ilişki olduğu tespit edilmiştir ( $P \leq 0.05$ ).

**Anahtar kelimeler:** *Arca noae*, histoloji, üreme, kondisyon indeksi, et verimi

## INTRODUCTION

Noah's Ark or ark shell (*Arca noae* Linnaeus, 1758) is Atlanto-Mediterranean species and distributed in Mediterranean, Black Sea, the eastern Atlantic Ocean, West Africa and the West Indies (Hayward et al., 1996; Öztürk et al., 2014). It is attached by a massive green byssus in dead mollusc shells, among stones, on semi mobile gravies or in rock crevices (Tebble, 1966; Hrs-Brenko and Legac, 1996; Morton and Peharda, 2008). It is collected occasionally between tide-marks and offshore to about 119 meters. Ark shell can reach up to 10 cm (Šiletić, 2006) and live approximately for 16 years (Peharda et al., 2002).

The production amount of ark shell in the world was approximately 30250 tons in 2015 (FAO, 2017). This production was carried out by China, Venezuela, Mexico, Korea and Costa

Rica. In addition that, it is particularly appreciated in Croatian Adriatic Sea is harvested by local fishermen using modified rakes or divers (Benović, 1997). In Turkey, unfortunately, there is no reported record about ark shell production in fisheries statistics. The most important reason; fishermen and production areas have not been controlled by the government. This species is only produced by fishing from coastal area for mostly bait of Sparidae species and rarely for human consumption. Although there is no scientific data about production, it is thought that natural beds have begun to overexploited and been affected adversely.

Most of the studies on ark shell in Mediterranean Sea, about population structure (growth and age) (Peharda et al., 2002; Peharda et al., 2003; Peharda et al., 2009), reproductive

cycle (Peharda et al., 2006), aquaculture (Župan et al., 2012; Župan et al., 2014), biochemical composition (Radić et al., 2014) have been carried out in Adriatic Sea. However, in Turkey, studies on basic biology of the species are lacking still while only faunistic studies have been conducted (Demir, 2003; Öztürk et al., 2005; Öztürk et al., 2014).

In this study, histological examination of the gonads of *A. noae* was carried out to determine the sexual characteristic for Aegean Sea, Turkey. These data will be key element to improve understanding reproductive biology. Therefore, outputs of present study have a great importance to ensure the sustainable fishery, to supply to legal legislations, to provide knowledge for aquaculture activities.

## MATERIALS AND METHODS

### Study area

This study was conducted in Gerence Bay (38°25' N and 26°30' E) located on the west side of Izmir Bay, Aegean Sea, Turkey; between August 2009 and July 2010 (Figure 1). Ark shells were collected monthly from natural stock by SCUBA diving from 1 m to 5 m water depth at shallow coastal water.

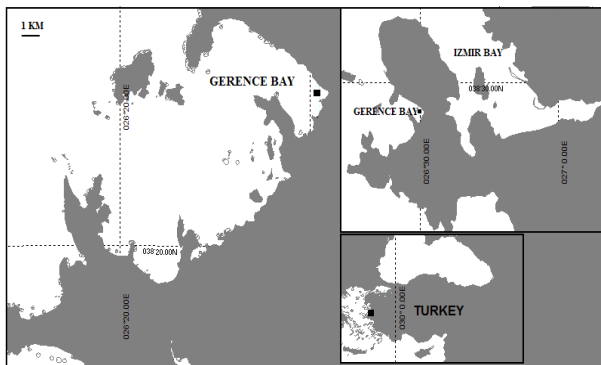


Figure 1. Location of study site in Gerence Bay (Aegean Sea, Turkey)

### Environmental parameters

Surface water temperature (°C) and salinity (psu) were measured by monthly using a thermometer ( $\pm 1^\circ\text{C}$ ) and light refractometer, respectively. Chlorophyll-a concentration was calculated by spectrophotometric method (Strickland and Parsons, 1972). Particulate inorganic matter (PIM) and particulate organic matter (POM) in suspension were determined by weight differences after heating of filtered papers (Jones and Iwama, 1991).

### Meat yield and condition index

Collected samples were transported to laboratory where they were fully removed from biofouling and other adherences. Then, samples were measured for biological parameters such as shell length, total weight and soft tissues except byssus. Whole weight and shell length were measured with an electronic calliper (Mitutoyo CD-15PK) and an electronic scale

(0.01 g, Sartorius GE 412), respectively. Shells were dried at 60°C for 48-72 h to a constant weight while soft tissues were dried by dry freezer (Christ Alfa-1-2 LDplus). Meat yield (MY) and condition index (CI) were calculated according to formulas used in Freeman (1974) and Crosby and Gale (1990), respectively.

$$MY = \frac{\text{wet meat weight (g)}}{\text{total weight (g)}} \times 100$$

$$CI = \frac{\text{dry meat weight (g)}}{\text{dry shell weight (g)}} \times 100$$

### Histological treatment

Gonad development stage (S1: early active, S2: developing, S3: mature, S4: partly spawning, S5: spent) and sex ratio were determined using histologically prepared slides. Histological procedures method was used in previous studies (Peharda et al., 2006; Sahin et al., 2006; Yurimoto et al., 2008). The top surface of the stomach for each specimen was dissected to obtain the gonad. The gonad samples were fixed in Davidson solution and dehydrated using alcohol between 70% and 100% series and then embedded in paraffin. Paraffin blocks were sectioned to 4µm thickness and stained with hematoxylin-eosin. Slides were observed under the light microscopy to determine stage of male and female development of gonad.

### Gonad index

A gonad index (GI) was calculated for each sample by ranking the different gametogenic stages as follows:

1=inactive (I)+spent (V),

2=early active (II)+late active (III)+partly spent (IV),

3= mature (IV)

These values were summed then divided the resulting value by the total number of animals in the sample (Soria et al., 2002).

$$GI = \frac{\text{sum of specimens} \times \text{category}}{\text{total number of specimens}}$$

### Statistically analysis

Percentage data was arcsine transformed before statistical treatment. The chi-square test was used to assess differences from the 1:1 sex ratio. The data distribution to determine normality was tested using the Kolmogorov-Smirnov Test. Pearson's correlation analysis was applied to determine the degree of association between environmental parameters (temperature, salinity, particulate inorganic matter, particulate organic matter and chlorophyll-a) and gonad index (GI), condition index (CI), meat yield (MY). Data were analyzed using SPSS 13.0 for Windows.

## RESULTS

### Environmental Parameters

Temperature showed a progressive decrease from 26.5 °C in August to 15.5 °C in February and then increased until July except May (Figure 2a). Salinity was recorded between 35psu in January and 40 psu in May and October (Figure 2b). Maximum chlorophyll-a values were observed in December and April (1.32 µg/l) and minimum values were observed in February and June (0.30 µg/l and 0.46µg/l, respectively) (Figure 2c). Monthly variation in particulate organic matter (POM) values associated with particulate inorganic matter value (PIM) ( $P \leq 0.05$ ). PIM and POM peaked as 24.5 mg/l and 11.2 mg/l in October, respectively (Figure 2c).

### Meat Yield and Condition Index

Length range, weight range, meat yield and condition index were showed in Table 1. Meat yield and condition index reveal a positive relationship between each other ( $P \leq 0.01$ ). The highest condition index was recorded as 12.8 in August. The lowest condition index was observed as 8.4 in September. After September, condition index showed fluctuation and it reached to 11.1 at the end of study

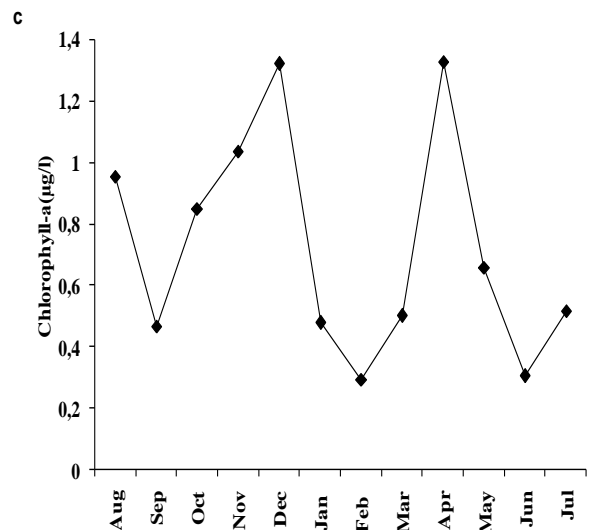
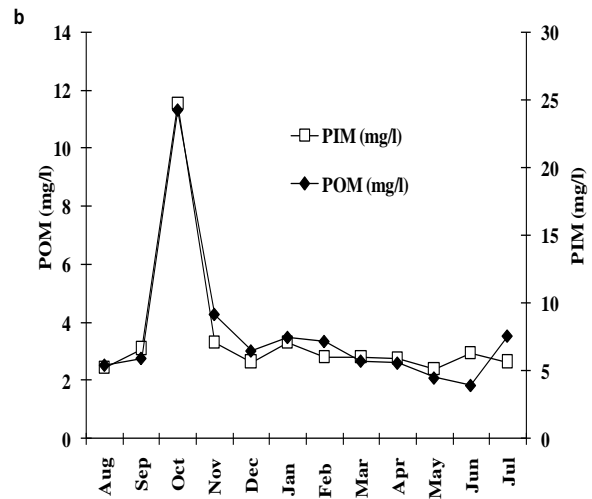
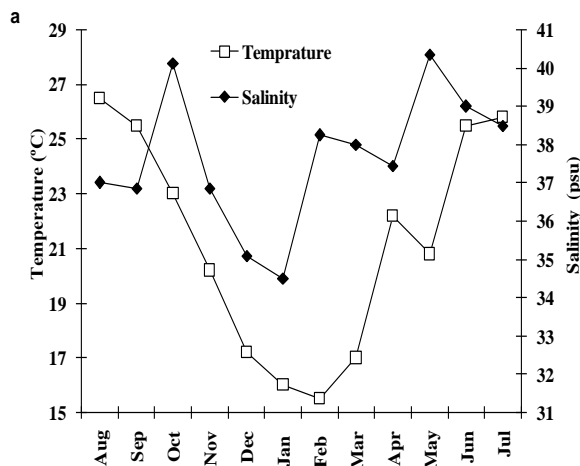


Figure 2. Monthly variations of environmental parameters in the study area (temperature (a), salinity (a), particulate organic matter POM (b), particulate inorganic matter PIM (b), chlorophyll-a (c))

Table 1. Monthly variation of shell length, total weight range, condition index (mean ± SE) and meat yield (mean ± SE) of Noah's ark from Gerence Bay, Aegean Sea

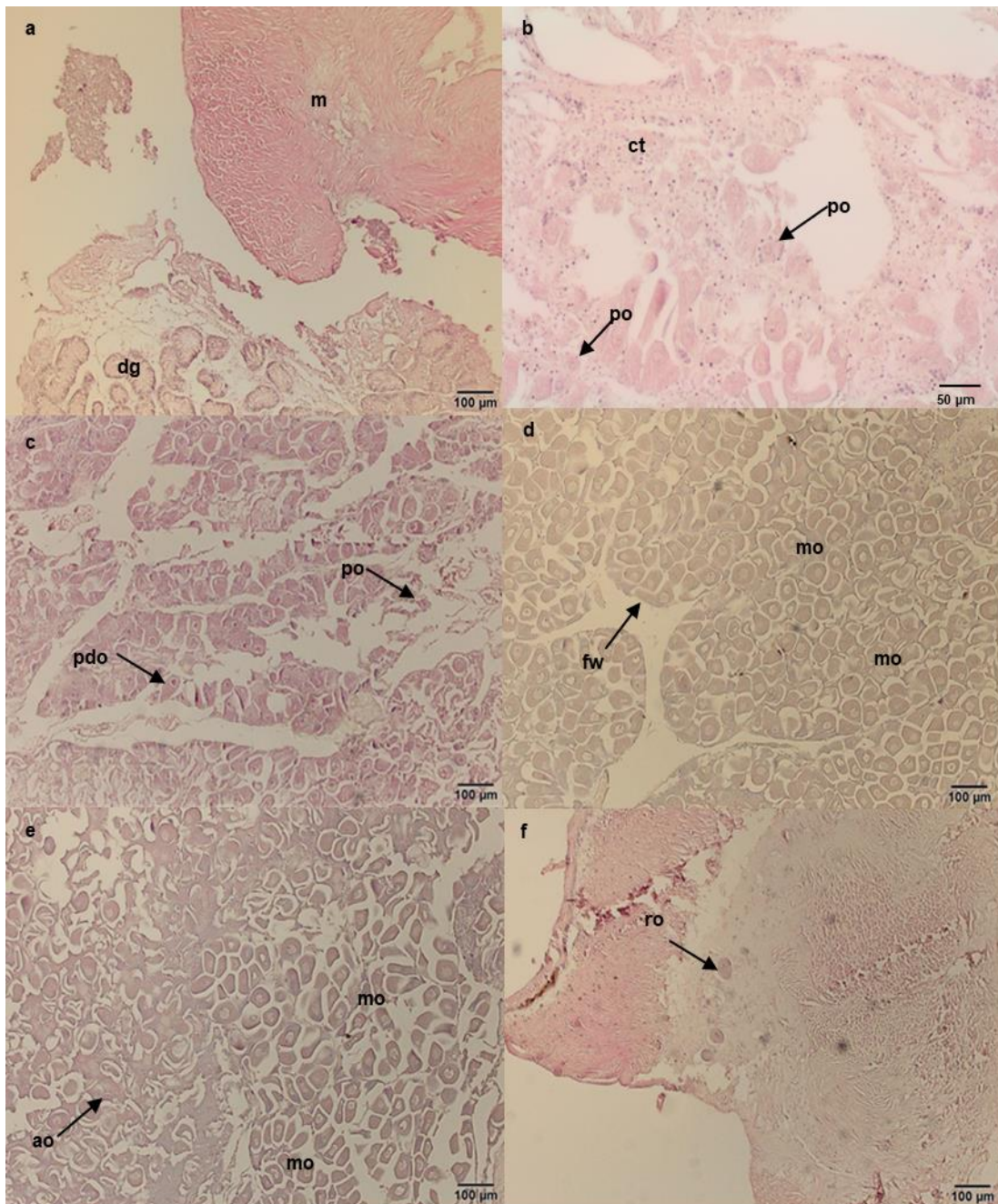
	Shell length (mm)	Live weight (g)	Meat Yield (%)	Condition index
August	34.50-71.00	10.60-57.42	27.71±2.23	12.87±0.71
September	36.00-70.00	9.34-50.39	17.48±0.40	8.60±0.27
October	30.96-76.43	4.88-54.61	20.52±1.66	10.37±0.30
November	33.09-55.75	7.58-28.54	22.50±0.61	11.13±0.37
December	38.09-73.46	7.61-47.46	21.14±0.54	11.36±0.45
January 10	42.56-74.39	10.81-53.89	20.47±0.46	10.95±0.30
February	42.67-73.55	11.79-49.79	21.89±0.89	12.03±0.93
March	48.03-78.00	14.11-70.23	22.27±0.65	11.61±0.34
April	50.40-82.00	21.72-78.26	23.47±0.52	12.65±0.37
May	38.03-77.26	13.94-64.42	22.85±0.63	12.38±0.29
June	45.72-70.30	14.21-53.04	20.77±0.49	11.97±0.32
July	43.70-70.50	11.51-48.21	22.72±0.58	11.14±0.29



### Sex Ratio

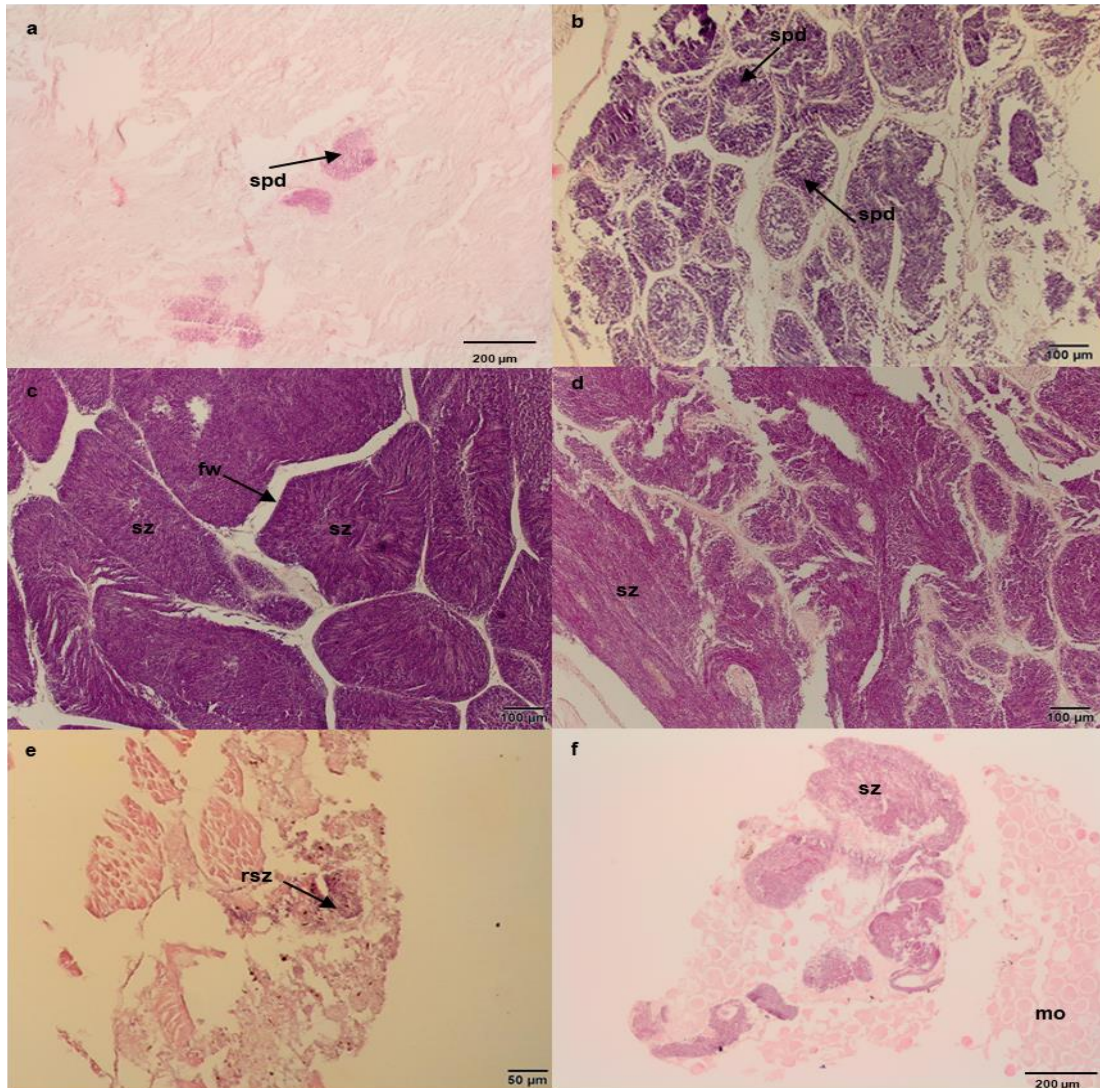
Amongst the total of 360 individuals examined, 84 male (23%), 181 female (50%), 3 hermaphrodite (0.8%) and 92 inactive (25%) were determined (Figure 3, Figure 4, Figure 5). Sex ratio (female: male) during reproductive period was 2.1:1 and female was favorite. The gonad development was not observed in September. Female was dominant through the

study period, except in October (6%) and November (20%). Hermaphrodite individuals were observed only one for each December (53.1mm – 32.58g), April (67.2mm – 50.63g) and May (55.24 mm – 32.58g) (Figure 4). At macroscopic observation color of gonad was observed mostly between purple and brown-cream. These colors were observed in female for purple and in male for brown-cream. Hermaphrodite individuals were determined as purple color.



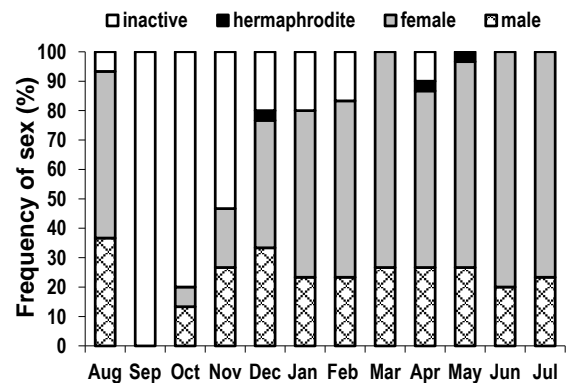
**Figure 3.** Photomicrographs showing inactive stage (a), reproductive maturity stages of ark shell in female gonad early active (b), late active (c), mature (d), partially spend (e), spent (f). ao: atresia oocyte, cd: connective tissue, dg: digestive gland, fw: follicle wall, mo: mature oocyte, m: muscle, ro: residual oocyte, pdo: pedunculated oocyte, previtellogenic oocyte





**Figure 4.** Photomicrographs showing reproductive maturity stages of ark shell in male gonad early active (a), late active (b), mature (c), partially spend (d), spent (e) and hermaphrodite individual (f).fw: follicle wall, mo: mature oocyte, rsp: residual spermatozoa, spd: spermatids, sz: spermatozoa

The reproductive cycle of both sex of *A. noae* from Gerence Bay is presented in Figure 5 and Figure 6. After inactive stage in September no males were in early active stage except in December although early active stage in female occurred from October to March. It appeared that gonad development of females realized longer than male. Late active stage in male individuals was found between October and March. Females in this stage occurred from December to February, and in April. Maturation stage in both sexes was seen at the same time but this stage in female was higher proportion than male. Spawning in female began in January (7%) and increased until June (91%) while spawning in female was observed through the year and more intensive than male. During the study period, spent stage in both sexes was observed firstly in August. After August, spent stage in male and female was observed from October to March and from December to April, respectively.



**Figure 5.** Monthly changes in percentage of inactive, hermaphrodite, female and male individuals in the total population

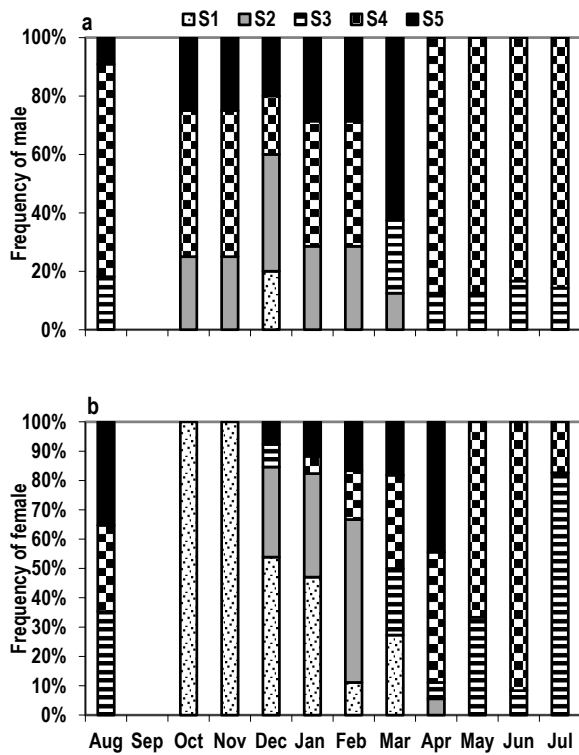


Figure 6. Frequency of gametogenesis in male (a) and female (b)

To sum up the reproduction cycle of the population, beginning of the study inactive stage was determined as 6%, and then it was recorded as %100 in September and gradually decreased to 10% until April. Early and late active stage occurred between October and March. The highest percentage of both stages was found in December and January. Mature stage was seen in August (26%) and December (3%), between March (23%) and July (66%). Spawning stage was observed throughout the study period except in September. Its highest percentage was determined in June (90%) and the lowest in October and December (6%). Spent stage occurred in August, from November to April with maximum activity in March (30%) (Figure 7).

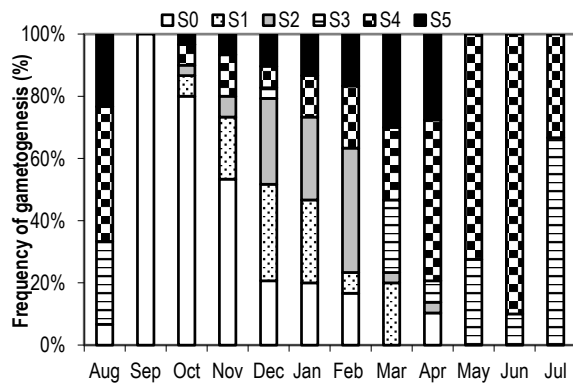


Figure 7. Frequency of different stages of in total population

### Gonad Index

GI was sharply dropped from 2.4 (August) to 1 (September), after this month it was gradually increased and reached to 3 (May). It was stable between May and July (Figure 8). GI was significantly related to condition index and meat yield ( $P \leq 0.05$ ). Besides, a negative correlation was noted between PIM and GI ( $P \leq 0.05$ ). No significant relationships were found between other environmental parameters (Table 2).

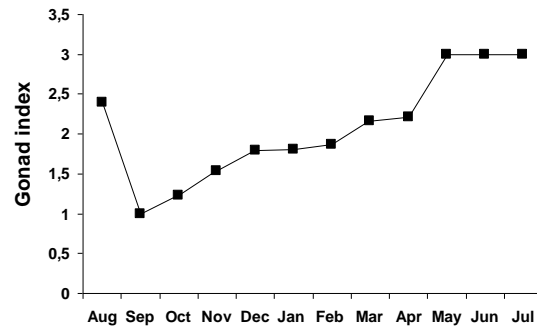


Figure 8. Monthly variation of gonad index (GI) in Noah's ark

Table 2. Pearson correlation of environmental parameters and other parameters (temperature (T), salinity (S), chlorophyll-a (ChL), particulate organic matter (POM), particulate inorganic matter (PIM)) gonad index (GI), meat yield (MY) and condition index (CI)

	T	S	Ch	POM	PIM	GI	MY	CI
T	1	.355	.068	.078	-.072	.091	.135	-.170
S		1	-.262	.307	.129	.296	.103	.168
Ch			1	.077	.200	-.132	.378	.221
POM				1	.895**	-.544	-.338	-.375
PIM					1	-.577*	-.201	-.353
GI						1	.595*	.777**
MY							1	.821**
CI								1

\*\* Correlation is significant at the 0.01 level (2-tailed)

\* Correlation is significant at the 0.05 level (2-tailed)

### DISCUSSION

Previous studies have showed that environmental factors including temperature, salinity, food and energy metabolism influenced on gonad development and maturation in marine bivalves (Resgalla et al., 2007; Acarli et al., 2015; Hasan et al., 2017). This information is not consistent with previous results and same species may vary among geographical areas (Derbali et al., 2009; Kandeel et al., 2013). Comparisons of the spawning period of Arcidae families' species in different localities are shown in Table 3. Peharda et al. (2006) reported that the correlation analyses indicated that an environmental factor was not directly influence the gonadal growth. Findings of the present study show similarities with Peharda et al. (2006). However, only negative association between PIM and

gonad index was found in the present study. It is known that increased amount of particulate inorganic particles negatively affect on feeding of bivalves wherefore particulate organic matter and phytoplankton are strongly diluted by inorganic particles (Ward and Macdonald, 1996). As a result of these, food quality in water column and filtration of bivalves rate can

decrease (Resgalla et al., 2007; Çelik et al., 2015). However, Lista et al. (2006) informed that *A. zebra* was well adapted to the high loads inorganic seston in the northeastern Venezuela. It is estimated that *A. noae* could not show same adaptation in this study whereas inorganic matter value was higher than in the northeastern Venezuela.

**Table 3.** A comparison of spawning period between location and Arcidae species

Locality	Spawning period	Species	References
Turkey	June-September	<i>Anadara inaequalvis</i>	Sahin et al., 2006
Japan	July - September	<i>Scapharca kagoshimensis</i>	Yurimoto et al., 2008
Venezuela	June-October	<i>Anadara notabilis</i>	Freites et al., 2010
Venezuela	July-late September	<i>Arca zebra</i>	Lista et al., 2006
Croatia-Adriatic Sea	June-September	<i>Arca noae</i>	Peherda et al., 2006
North Tunisia	November-April	<i>Arca noae</i>	Ghribi et al., 2017
Turkey	July-September		
	Mainly May-August	<i>Arca noae</i>	In this study

As it is known, condition index and meat yield values detect commercial quality of bivalves species (Orban et al., 2002), is a parameter of ecophysiological and economic importance, especially with regard to industrial processing (Yildiz et al., 2011). These parameters in bivalves were influenced by environmental parameters (mainly temperature or food availability) (Delgado and Camacho, 2005; Herrmann et al., 2009) and reproductive activities (Acarli et al., 2015; Christo et al., 2016). It is reported in Peherda et al. (2003) and Şahin et al. (2006) condition index was ranged for *Arca noae* in Mali Ston Bay from 9 (December and January) to 11 (April and June) and for *Anadara inaequalvis* in Southeastern Black Sea Coast from 4.2 (August) to 11.6 (May), respectively. Župan et al. (2014) estimated condition index for *A. noae* in Central Adriatic Sea (Pašman Channel) according to formulas in Davenport and Chen (1987). Condition index was found between 18 (December) and 25 (June) (Župan et al., 2014). In this study, a significant correlation was found between condition index and meat yield. Maximum condition index was determined as 12.8 in August when individuals were in mature and spawning period and minimum condition index was determined as 8.6 in September when individuals were in resting stage. Results of this study show that meat quality of *A. noae* has a good index during the study period, except September when it can be considered as suitable human for consumption.

Sex ratio of marine bivalves for a healthy population is nearest to 1:1 (Morton, 1991). Genetic control (Yusa et al., 2013) or hormones (Thompson, 1996) and changes in environmental conditions such as temperature, salinity and food availability also affect the sex ratio of bivalvia species (Chávez-Villalba et al., 2011; González-Araya et al., 2013; Teaniniuraitemoana et al., 2016). Peherda et al. (2006) notified that *Arca noae* may exhibit functional protandric dioecy with some male individuals changing to female in subsequent. They also determined that rising of female individuals' number is related with increasing shell length or age. Furthermore, Quayle (1969) and Breton et al. (2017) informed that population was in

favor of females when food availability conditions were favorable or it was in favor of male in when food availability conditions were poor. A correlation between sex ration and food quality or availability is explained by Diaz-Almela et al. (2004) that females need to heavier energy utilization to development of oocytes. Several authors highlighted that female was in favor in the population for *A. noae* (Valli and Parovel, 1981; Peherda et al., 2006; Ghribi et al., 2017), for *A. zebra* (Villaruel et al., 2016), for *Anadara transversa* (Walker and Pover, 2004), and for *Anadara antiquata* (Jahangir et al., 2014; Mzighani, 2005). In this study, female individuals dominated at the population with female to male ratio of 2:1. Some authors had expounded that a significant increase in the population of female associated with length or age. In the present study, it is suggested to consider that both food availability and age might be affected on sex ratio.

Hermaphrodite individuals were found as 2.2% for *A. noae* in south Adriatic Sea (Peherda et al., 2006) and 3% for *A. noae* in southwestern Adriatic Sea (Bello et al., 2013), 5.49% for *Anadara antiquata* in Tanzania (Mzighani, 2005) and 1.1% for *A. noae* in the Aegean Sea (present study). Yolkolu and Lök (2000), and Eversole (1989) stated that the result of environmental trigger such as sudden changes in temperature and salinity or high turbidity maybe lead to hermaphrodite individuals in the population. Furthermore, one gametogenic phase can continue to the next sex phase while reabsorption uncompleted in protandric hermaphroditism (Acarli et al., 2015).

Although there is no relationship between GI and temperature, development seems to be begun during the winter month and reached to maturation and spawning mainly summer months. This information can help for protocol managing of this species for aquaculture activities and strategy of fishery. Also, it has a great importance to ensure the sustainable fishery, to supply to legal legislations.



This paper is the first study to determine reproduction characteristics of *A. noae* in the Turkish coastal waters. Further studies on stock assessment, spawning season, size at first maturity and morphometric characteristics are needed to ensure the sustainability of the stocks. Therefore, decision-makers and Ministry of Food, Agriculture and Livestock of the government should assess and monitor the stock by the relevant investigations, and establish appropriate policy and planning for stock management of this species. It is vital that measures must be taken before the species can be threatened

or endangered such as other vulnerable or endangered species. Only then the stock management practices will be fully successful.

## ACKNOWLEDGEMENTS

Special thanks to Dr. Ali Kırtık from Ege University, Fisheries Faculty for their help with technical assistance during the study. We are also grateful to Semih Kale for help with English language correction.

## REFERENCES

- Acarlı, S., Lök, A., Kırtık, A., Acarlı, D., Serdar, S., Kucukdermenci, A., Yigitkurt, S., Yildiz, H. & Saltan, A.S. (2015). Seasonal variation in reproductive activity and biochemical composition of flat oyster (*Ostrea edulis*) in the Homa Lagoon, Izmir Bay, Turkey, 487-495.
- Bello, G., Paparella, A., Corriero, A. & Santamara, N. (2013). Protandric hermaphroditism in bivalve *Arca noae* (Mollusca: Arcidae). *Mediterranean Marine Science*, 14(1), 86-91. DOI: [10.12681/mms.326](https://doi.org/10.12681/mms.326)
- Benović, A. (1997). The history, present condition, and future of the molluscan fisheries of Croatia. In: MacKenzie, Jr., C.L., Burrell Jr., V.G., Rosenfield, A., Hobart, W.L. (Eds.), *The History, Present Condition, and Future of the Molluscan Fisheries of North and Central America and Europe*. Volume 3, Europe, NOAA Technical Report NMFS, vol. 129. U.S. Department of Commerce, pp, 217–226.
- Breton, S., Capt, C., Guerra, D. & Steward, D. (2017). Sex Determining Mechanisms in Bivalves. Preprints ([www.preprints.org](http://www.preprints.org)) | NOT PEER-REVIEWED | Posted: 30 June 2017.
- Christo, S.W., Ivachuk, C.S., Ferreira-Júniorc, A.L. & Absher, T.M. (2016). Reproductive periods of *Lucina pectinata* (BIVALVE; LUCINIDAE) in the Paranaguá Estuarine Complex, Paraná – Brazil. *Brazilian Journal of Biology*, 76(2), 300-6. DOI: [10.1590/1519-6984.12514](https://doi.org/10.1590/1519-6984.12514)
- Christo, S.W., Ivachuk, C.S., Ferreira-Júniorc, A.L. & Absher, T.M. (2016). Reproductive periods of *Lucina pectinata* (BIVALVE; LUCINIDAE) in the Paranaguá Estuarine Complex, Paraná – Brazil. *Brazilian Journal of Biology*, 76(2), 300-6. DOI: [10.1590/1519-6984.12514](https://doi.org/10.1590/1519-6984.12514)
- Chávez-Villalba, J., Soyoz, C., Huvet, A., Gueguen, Y., Lo, C. & Le Moullac, G. (2011). Determination of gender in the pearl oyster *Pinctada margaritifera*. *Journal of Shellfish Research*, 30, 231-240. DOI: [10.2983/035.030.0206](https://doi.org/10.2983/035.030.0206)
- Crosby M.P. & Gale L.D. (1990). A review and evaluation of bivalve condition index methodologies with a suggested standard method. *Journal of Shellfish Research*, 9, 233-237.
- Çelik, M.Y., Karayücel, S., i., Karayücel, Eyüpoğlu, B. & Öztürk, R. (2015). The effects of environmental factors on survival, growth and biochemical composition of transplanted oysters (*Ostrea edulis* Linnaeus, 1758). From Aegean Sea to southern Black Sea. *Aquaculture Research*, 46,959-968. DOI: [10.1111/are.12253](https://doi.org/10.1111/are.12253)
- Davenport, J. & Chen, X. (1987). A comparison of methods for the assessment of condition in the mussel (*Mytilus edulis* L.). *Journal of Molluscan Study*, 53, 293–297. DOI: [10.1093/mollus/53.3.293](https://doi.org/10.1093/mollus/53.3.293)
- Delgado, M. & Perez-Camacho, A. (2005). Histological study of the gonadal development of *Ruditapes decussatus* (L.) (Mollusca: Bivalvia) and its relationship with available food. *Scientia Marina*, 69(1), 87-97. DOI: [10.3989/scimar.2005.69n187](https://doi.org/10.3989/scimar.2005.69n187)
- Demir, M. (2003). Shells of Mollusca collected from the seas of Turkey. *Turkish Journal of Zoology*, 7, 101-140.
- Derbalı, A., Jarbouı, O. & Ghorbel, M. (2009). Reproductive biology of the cockle *Cerastoderma glaucum* (Mollusca: Bivalvia) from the nor-h coast of Sfax (Gulf of Gabes, Tunisia). *Ciencias Marinas*, 35,141-152. DOI: [10.7773/cm.v35i2.1485](https://doi.org/10.7773/cm.v35i2.1485)
- Diaz-Almela, E., Boudry, P., Launey, S. & Lapègue, S. (2004). Reduced Female Gene Flow in the European flat oyster *Ostrea edulis*. *Journal of Heredity*, 95(6), 510-516. DOI: [10.1093/jhered/esh073](https://doi.org/10.1093/jhered/esh073)
- Eversole A.G. (1989). Gametogenesis and spawning in North American clam populations: implications for culture. In: Manzi J.J. and Castagna M. (eds) *Clam mariculture in North America*. Elsevier Science. Amsterdam, pp.75-109.
- FAO (2017). Global Fishery and Aquaculture Production Statistics 1950–2015. FISHSTAT J -Software for fishery statistical time series, <http://www.fao.org/fishery/statistics/software/fishstatj/en>
- Freeman, K.R. (1974). Growth, mortality and seasonal cycle of *Mytilus edulis* in two Nova Scotian embayments, Technical Report No. 500, Department of the environment, Fisheries and Marine Service, Canada, 112 pp.
- Ghribi, F., Bello, Zupa, R., Passantiono, L., Santamaria, N., El Cafsi, M. & Carriero, A. (2017). Reproductive ant tissue plasticity in *Arca noae* (Bivalvia: Arcidae). *The European Zoological Journal*, 473-487. DOI: [10.1080/24750263.2017.1368725](https://doi.org/10.1080/24750263.2017.1368725)
- González-Araya, R., Quillien, V. & Robert, R. (2013). The effects of eight single microalgal diets on sex-ratio and gonad development throughout European flat oyster (*Ostrea edulis* L.) conditioning. *Aquaculture*, 400-401,1-5. DOI: [10.1016/j.aquaculture.2013.02.036](https://doi.org/10.1016/j.aquaculture.2013.02.036)
- Hayward, P., Nelson-Smith, T. & Shields, C. (1996). *Sea Shore of Britain and Europe*. Collins Pocket Guide, Harper Collins Publisher, London. 352 pp.
- Hasan, M.M., Qin, J.G. & Li, X. (2017). Gametogenesis, sex ratio and energy metabolism in *Ostrea angasi*: implications for the reproductive strategy of sperm casting marine bivalves. *Journal of Molluscan Studies*, 1-8.
- Herrmann, M., Alfaya, J.E.F., Lepore, M.L., Penchaszadeh, P.E. & Laudien, J. (2009). Reproductive cycle and gonad development of the Northern Argentinean *Mesodesma mactroides* (Bivalvia: Mesodesmatidae). *Helgoland Marine Research*, 63, 207–218. DOI: [10.1007/s10152-009-0150-2](https://doi.org/10.1007/s10152-009-0150-2)
- Hrs-Brenko, M. & Legac, M. (1996). A review of bivalve species in the eastern Adriatic Sea. II Pteromorpha (Arcidae and Noetidae). *Natura Croatica*, 5, 221–247.
- Jahangir, S., Siddique, G. & Ayub, Z. (2014). Temporal variation in the reproductive pattern of blood cockle *Anadara antiquate* from Pakistan (northern Arabian Sea). *Turkish Journal of Zoology*, 38, 263-272. DOI: [10.3906/zoo-1302-7](https://doi.org/10.3906/zoo-1302-7)
- Jones, T.O. & G.K. Iwama, (1991). Polyculture of the Pacific oyster, *Crassostrea gigas* (Thurnberg) with Chinook salmon, *Oncorhynchus tshawytscha*. *Aquaculture*, 92, 313–322. DOI: [10.1016/0044-8486\(91\)90037-8](https://doi.org/10.1016/0044-8486(91)90037-8)
- Kandeel, K.E., Mohammed, S.Z., Mostafa, A.M. & AbdAlla, M.E. (2013). Reproductive biology of the cockle *Cerastoderma glaucum* (Bivalvia: Cardiidae) from Lake Qarun, Egypt. *Egyptian Journal of Aquatic Research*, 39, 249-260. DOI: [10.1016/j.ejar.2013.12.003](https://doi.org/10.1016/j.ejar.2013.12.003)
- Lista, M., Lodeiros, C., Prieto, A., Himmelman, J.H., Castañeda, J., Gacia, N. & Velazquez, C. (2006). Relation of seasonal changes in the mass of the gonad and somatic tissues of the zebra ark shell *Arca zebra* to



- Environmental Factors. *Journal of Shellfish Research*, 25, 969-973. DOI: [10.2983/0730-8000\(2006\)25\[969:ROSCIT\]2.0.CO;2](https://doi.org/10.2983/0730-8000(2006)25[969:ROSCIT]2.0.CO;2)
- Mzighani, S. (2005). Fecundity and population structure of cockles, *Anadara antiquate* L. 1758 (Bivalvia: Arcidae) from a sandy/ muddy beach near es Salaam, Tanzania. *Western Indian Ocean Journal of Marine Science*, 1,77-84.
- Morton, B. (1991). Do the Bivalvia demonstrate environment-specific sexual strategies? A Hong Kong model. *Journal of Zoology*, 223, 131-142. DOI: [10.1111/j.1469-7998.1991.tb04754.x](https://doi.org/10.1111/j.1469-7998.1991.tb04754.x)
- Morton, B. & Peharda, M. (2008). The biology and functional morphology of *Arca noae* (Bivalvia: Arcidae) from the Adriatic Sea, Croatia, with a discussion on the evolution of the bivalve mantle margin. *Acta Zoologica*, 89,19–28. DOI: [10.1111/j.1463-6395.2007.00288.x](https://doi.org/10.1111/j.1463-6395.2007.00288.x)
- Orban, E., Di Lena, G., Navigato Casini, I., Marzelli, A. & Caproni, R. (2002). Seasonal changes in meat content, condition index and chemical composition of mussel (*Mytilus galloprovincialis*) cultured in two different Italian sites. *Food Chemistry*, 77,57-65. DOI: [10.1016/S0308-8146\(01\)00322-3](https://doi.org/10.1016/S0308-8146(01)00322-3)
- Öztürk, B., Özgür, E. & Ürün, A., (2005). Ölüdeniz Lagünü denizel biyoçeşitliliği üzerine bir ön çalışma. Ölüdeniz Lağünü Sürdürülebilir Yönetim Sempozyumu, Ölüdeniz, 27-28 Ekim 2005, 64-83.
- Öztürk B., Doğan, A., Bitlis-Bakır, B. & Salman, A. (2014). Marine molluscs of the Turkish coasts: an updated checklist. *Turkish Journal of Zoology*, 38, 832-879. DOI: [10.3906/zoo-1405-78](https://doi.org/10.3906/zoo-1405-78)
- Peharda, M., Richardson, C.A., Onfori, A.B. & Crnčević, M. (2002). Age and growth of the Bivalve *Arca noae* L. in the Croatia Adriatic Sea. *Journal of the Molluscan Study*, 68, 307-310. DOI: [10.1093/mollus/68.4.307](https://doi.org/10.1093/mollus/68.4.307)
- Peharda, M., Bolotin, J., Vrgoč, N., Jasprića, N., Bratoš, A. & Skaramuša, B. (2003). A study of the ark shell (*Arca noae* Linnaeus 1758) in Mali Stone Bay, Adriatic Sea. *Journal of Shellfish Research*, 22(3), 705-709.
- Peharda, M., Mladineo, I., Bolotin, J., Kekez, L. & Skaramuša, B. (2006). The reproductive cycle and potential protandric development of the Noah's Ark shell, *Arca noae* L.: Implications for aquaculture. *Aquaculture*, 252, 317-327. DOI: [10.1016/j.aquaculture.2005.07.007](https://doi.org/10.1016/j.aquaculture.2005.07.007)
- Peharda, M., Stagličić, N., Ezgeta, D., Vrgoč, N., Isajlović, I. & Krstulović-Šifner, S. (2009). Distribution and population structure of *Arca noae* in the Pašman Channel. *Ribarstvo*, 67(1), 3-10.
- Quayle D.B. (1969). Pacific Oyster Culture in British Columbia. *Fisheries Research Board of Canada*, 169, 1-192.
- Radić, I.D., Carić, M., Najdek, N., Jasprića, J., Bolotin, Peharda, M. & Cetinić, A.B. (2014). Biochemical and fatty acid composition of *Arca noae* (Bivalvia, Arcidae) from the Mali Stone Bay, Adriatic Sea. *Mediterranean Marine Science*, 15(3),520-531. DOI: [10.12681/mms.436](https://doi.org/10.12681/mms.436)
- Resgalla, C., Brasil, E.S., Laitano, R.W. & Filho, R. (2007). Physioecology of mussel *Perna perna* (Mytilidae) in south Brazil. *Aquaculture*, 270,464-474. DOI: [10.1016/j.aquaculture.2007.05.019](https://doi.org/10.1016/j.aquaculture.2007.05.019)
- Soria, R.G., Pascual, M.S. & Cartes, V.H.F. (2002). Reproductive cycle of the cholgapaleta, *Atrina seminuda* Lamarck, 1819 (Bivalvia, Pinnidae) from Northern Patagonia, Argentina. *Journal of Shellfish Research*, 21(2),479-488.
- Strickland J.D.H., & Parsons, T.R. (1972). A Practical Handbook of Seawater Analysis. *Fisheries Research Board of Canada*, Ottawa, 310 pp.
- Şahin, C., Düzgüneş, E. & Okumuş, İ. (2006). Seasonal variations in condition index and gonadal development of the introduced blood cockle *Anadara inaequalis* (Bruguiere, 1789) in the Southeastern Black Sea Coast. *Turkish Journal of Fisheries and Aquatic Sciences*, 6,155-163.
- Šiletić, T. (2006). Marine fauna of Mljet National Park (Adriatic Sea, Croatia). 5. Mollusca, Bivalvia. *Natura Croatica*, 15(3),109-169.
- Tebble, N. (1966). British Bivalve Seashells A Hand Book of Identification. Trustees of The British Museum (Natural History), London. 213 pp.
- Teaniuraitemoana, V., Leprêtre, M., Levy, P., Vanaa, V., Parrad, S., Gaertner-Mazouni, N., Gueguen, Y., Huvet, A. & Le Moullac, G. (2016). Effect of temperature, food availability, and estradiol injection on gametogenesis and gender in the pearl oyster *Pinctada margaritifera*. *Journal of Experimental Zoology*, 325A, 13-24. DOI: [10.1002/jez.1992](https://doi.org/10.1002/jez.1992)
- Thompson, R.J., Newell, R.I.E., Kennedy, V.S. & Mann, R. (1996). Reproductive processes and early development. pp 335-370 In, V. S. Kennedy, R. I. E. Newell, and A.F. Eble. (Eds.) "The Eastern Oyster, *Crassostrea virginica*." University of Maryland Sea Grant Press, College Park, MD. 734p.
- Walker, R.L., & Power, A.J. (2004). Growth and gametogenic cycle of the transverse ark, *Anadara transversa* in coastal Georgia. *American Malacological Bulletin*, 18, 55-60.
- Ward, J.E. & MacDonald, B.A. (1996). Pre-ingestive feeding behaviors of two sub-tropical bivalves (*Pinctada imbricata* and *Arca zebra*), responses to an acute increase in suspended sediment concentration. *Bulletin of Marine Science*, 59(2), 471-432.
- Valli, G. & Parovel, C. (1981). Aspects de la reproduction et de la biométrie chez *Arca noae* L. (Mollusca, Bivalvia). Rapports et procès-verbaux des réunions. *Commission Internationale pour l'Exploration Scientifique de la Mer Méditerranée*, 27(2),135-136.
- Villarreal, J., Acosta, V. & Arreche, D. (2016). Condición fisiológica de una población de *Arca zebra* (Bivalvia, Arcidae) del banco de Chacopata, Sucre. *Revista de Biología Tropical*, 64(3), 1345-1352. DOI: [10.15517/rbt.v64i3.18424](https://doi.org/10.15517/rbt.v64i3.18424)
- Yıldız, H., Berber, S., Acarlı, S. & Vural, P. (2011). Seasonal variation in the condition index, meat yield and biochemical composition of the flat oyster *Ostrea edulis* (Linnaeus, 1758) from the Dardanelles, Turkey. *Italian Journal of Animal Science*, 10, 22-26. DOI: [10.4081/ijas.2011.e5](https://doi.org/10.4081/ijas.2011.e5)
- Yurimoto T., Mori Y., Ito S. & Maeno Y. (2008). Reproductive cycle of the subcrenated ark shell *Scapharca kagoshimensis* (Togunaga, 1906) in Ariake Bay, Japan. *Journal of Shellfish Research*, 27(5), 1101-1108. DOI: [10.2983/0730-8000-27.5.1101](https://doi.org/10.2983/0730-8000-27.5.1101)
- Yusa, Y., Breton, S. & Hoeh, W.R. (2013). Population genetics of sex determination in Mytilus Mussels, Reanalyses and a model. *Journal of Heredit*, 104(3),380–385. DOI: [10.1093/jhered/est014](https://doi.org/10.1093/jhered/est014)
- Yolkolu, S. & Lök, A. (2000). İstiridyelerin (*Ostrea edulis* Linnaeus, 1758) gonad gelişim safhaları ve cinsiyet oranı. *Ege Journal of Fisheries and Aquatic Sciences*, 17(1-2), 127-136.
- Župan, I., Peharda, M., Ezgeta-Balić, D. & Šarić, T. (2012). Noah's ark shell (*Arca noae* Linnaeus, 1758) what do we need to know for starting up its aquaculture? *Croatian Journal of Fisheries*, 70(2), 71-81.
- Župan, I., Peharda, M., Dolenc, T., Dolenc, M., Rožič, P.Z., Lojen, S., Ezgeta-Balić, D. & Arapov, J. (2014). Aquaculture assessment of Noah's ark (*Arca noae* Linnaeus, 1758) in the central Adriatic Sea (Croatia). *Journal of Shellfish Research*, 33(2),433-441. DOI: [10.2983/035.033.0212](https://doi.org/10.2983/035.033.0212)